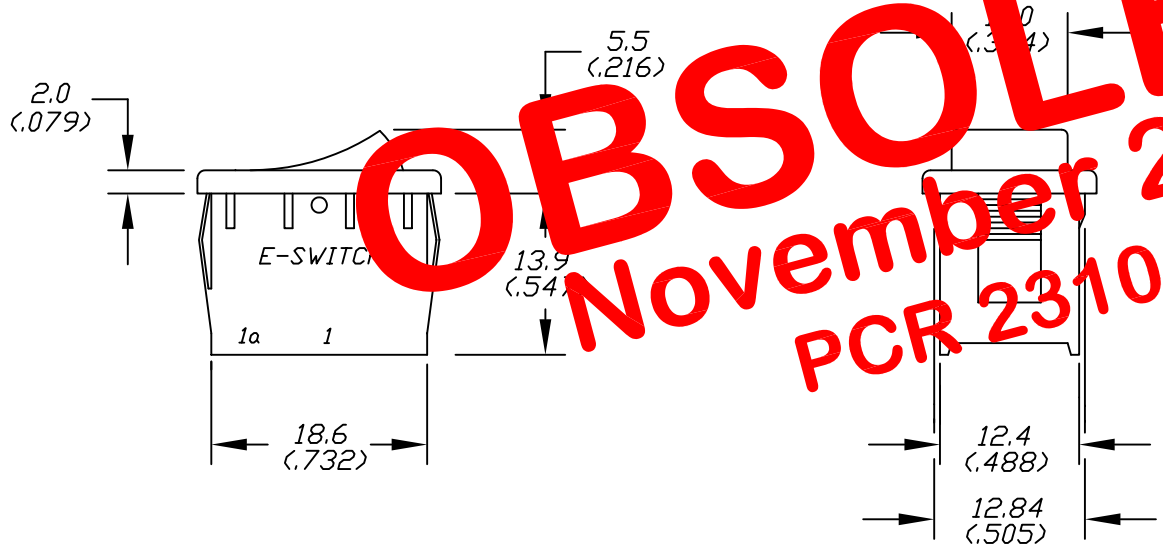
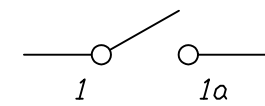


RECOMMEND P.C.B. LAYOUT

| PANEL THICKNESS | X |
|-----------------------|-------------|
| 0.75-1.25 (.030-.049) | 19.2 (.756) |
| 1.25-2.0 (.079-.118) | 19.4 (.764) |
| 2.0-3.0 (.079-.118) | 19.8 (.780) |



OBSOLETE
November 2017
PCR 23106



CIRCUIT: SPST
CONTACT CONFIGURATION

- NOTES:
1. ALL DIMENSIONS IN MM (INCH)
 2. GENERAL TOLERANCE: 0.0±0.4
0.00±0.25
 3. TERM. NOS. FOR REF. ONLY
 4. RATING: 15A 125VAC; 6A 250VAC

E-SWITCH®

| | | | | | | | | | |
|---|---------|-------------------------|---------|------|----------------------------|---------|----|---------|-----|
| | | | | | TITLE | | | | |
| | | | | | R1966AWHTWHTWC -Wire Crimp | | | | |
| A | 10624 | RELEASED FOR PRODUCTION | 5/11/00 | MM | SCALE | DATE | DR | DWG | REV |
| REV. | ECN No. | DESCRIPTION | DATE | CHKD | 1.5:1 | 5/11/00 | MM | M301116 | A |
| <small>THE INFORMATION CONTAINED IN THIS DOCUMENT IS PROPRIETARY TO E-SWITCH AND IS NOT TO BE COPIED OR TRANSFERRED</small> | | | | | | | | | |